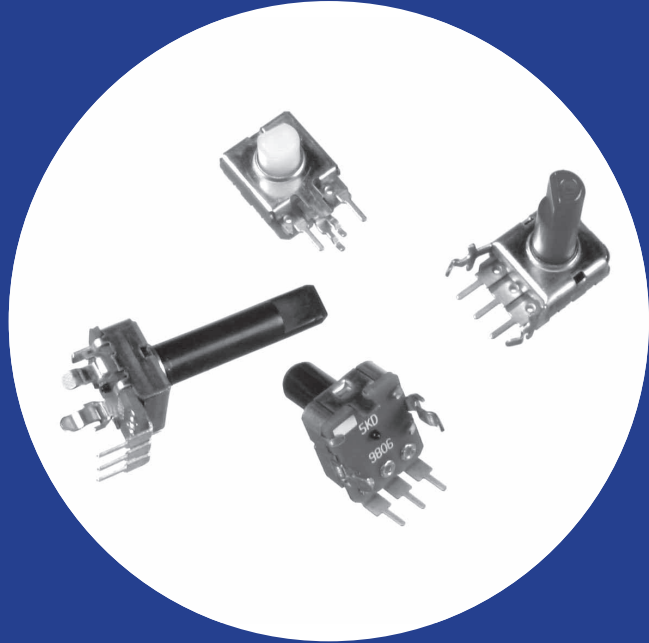


Commercial 12mm Diameter Composition Variable Resistors

Features

- Miniature 12mm size
- Low cost
- Snap-in bracket for PC board mounting
- Detent available
- Insulated shaft available
- RoHS compliant



Electrical and Mechanical Specifications

Resistance Range

Standard: 500 ohms through 1 megohms.
Special: For non-standard resistance values, please contact CTS.

Resistance Tolerance

Standard: $\pm 20\%$
Special: Tighter tolerances available in most resistance values.

Power Rating, Watts

0.15 watts @ 50°C derated to no load @ 85°C for linear curve.
0.1 watts @ 50°C derated to no load @ 85°C for regular non-linear curve.

Voltage Rating

Across end terminals:
Standard 250 VDC; Special: 350 VDC load not to exceed wattage ratings at given ambient temperature.

Insulation Resistance

100 Megohms min. @ 250 VDC.

Rotational Angle

Total Rotation: $300^\circ \pm 5^\circ$
Effective Electrical Rotation: 280° (approximate)

Rotational Torque

20 – 216 gcm (0.3~3 in-oz)

Stop Strength

5.76 kg-cm (5 in-lb) min. for no detent pots
3 kg-cm (2.6 in-lb) min. for with detent pots

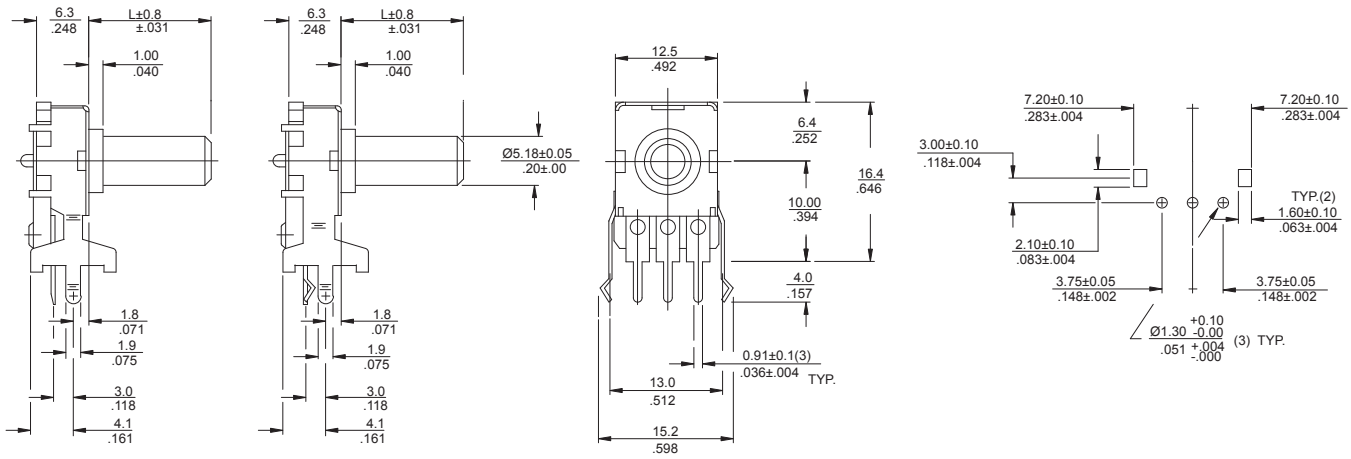
Mounting Information

P.C. board mounting
Type "X": Control shaft parallel to P.C. board.
Type "U": Control shaft vertical to P.C. board.
Type "H": Same as "X" type except terminals hooked

Detent

Center detent available.

XM 296RE/HM 296RE Molded Shaft, Control Shaft Parallel to P.C. Board

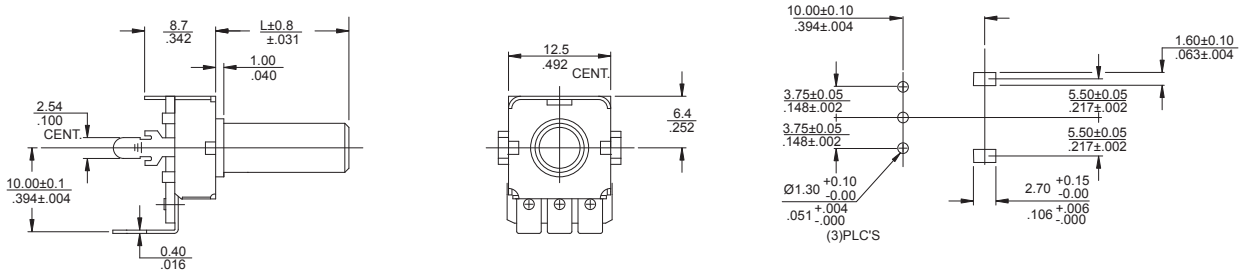


X Terminal Type

H Terminal Type

DIMENSION: $\frac{\text{mm}}{\text{INCH}}$

UM 296RE Molded Shaft, Control Shaft Vertical to P.C. Board



DIMENSION: $\frac{\text{mm}}{\text{INCH}}$

Ordering Information

